

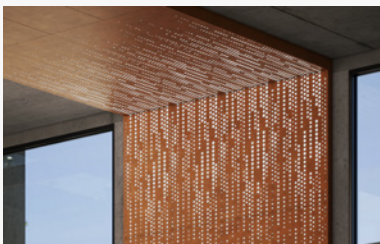


Arkтура and Pure + FreeForm have collaborated to offer designers and architects new, unique, premium finishes for Arktura's collection of standard panel systems.

These metallic patinas and wood textures are available to pair with a wide array of panel systems, including the biophilic, geometric, linear, and minimalist patterns across Arktura's Vapor®, Trace®, and Particle® lines and bespoke applications in Vapor® Graphic Perf® Adaptive system.

Experience the ideal blend of premium finishes and precision-perforated panels to elevate your commercial interior design with Arktura and Pure + FreeForm.

Compatible Lines:



Vapor®



Trace®



Particle®



Vapor® Graphic Perf®

Premium Finishes

Metallic Patinas

Available Options:



Hollywood Parisian Rust Hampton Brass Vintage Nickel

Wood Textures

Available Options:



Roma Noce Rustic Timber Autumn Cherry Pearl White Oak Miele Maple



Premium Finishes - Specifications

Attachment Method:

- Ceiling: Torsion Spring Attachment via Standard Torsion Grid (By Others)
- Wall: Vertika® Wall Channel System

Panel Dimensions:

- 2' x 4' x 1.5"

*For custom panel sizes contact your local Arktura Rep.

Material Thickness:

- 1mm Aluminum Standard/Interior

Notable Panel Properties:

- 100% Recyclable
- Single Skin
- ≥ 20% Recycled Content
- VOC Free
- Non-combustible

Fire Performance:

Pure + FreeForm sheets are non-combustible.

Interior/Exterior:

All Pure + FreeForm finishes can be used for most interior applications, and select finishes can be used for exteriors as well.

Exterior applications are subject to evaluation and require collaboration with Arktura's Solutions Studio®.

Contact your local Arktura rep to learn more <https://arktura.com/contact/>

WARRANTY:

20 Year Limited Warranty

Refer to PURE+FREEFORM for warranty terms and conditions.

Cleaning & Maintenance

Cleaning Instructions:

Clean exposed surfaces with non-solvent-based, non-abrasive commercial neutral detergent and clean water. Wipe with soft towel or rag.

Additional Notes:

Panels should be stored flat and kept dry. To avoid corrosion, please do not remove panels from original packaging, until panels are in the installation space and ready to be installed.

Protective film should be removed immediately after installation.

The following acts should be avoided or excessive adhesion and surface degradation will occur:

- Direct exposure of protective film to sunlight; film must be shaded.
- Leaving protective film in contact with solvent or oil for an extended period.
- Exposing protective film to extremes in temperature.

For technical information from PURE+FREEFORM
please call **612.208.8374** or visit www.purefreeform.com to learn more