



A R K T U R A



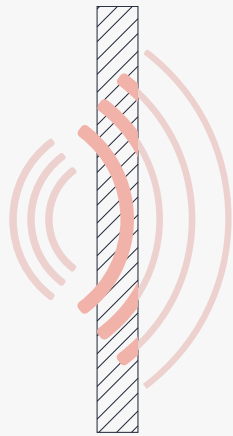
# Atmosphera<sup>®</sup> Contour



**Adaptive** Ceiling Baffles

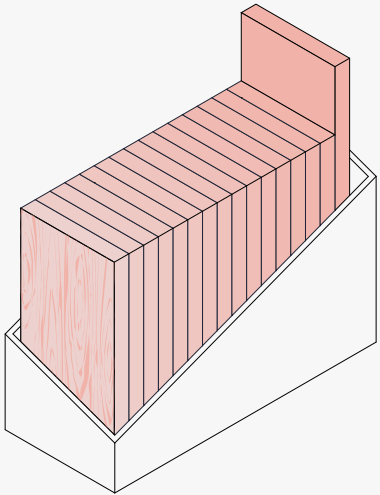
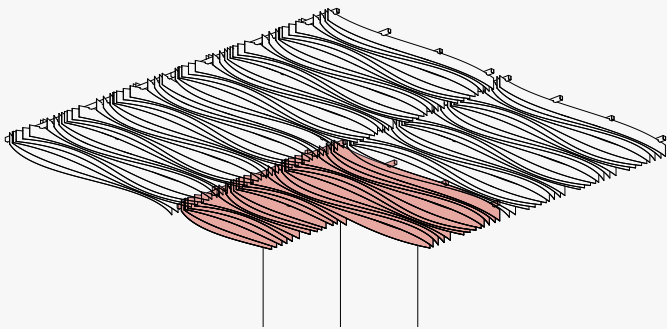
# Our Key Features

Contour’s curving fins can really generate a beautiful visual flow through a space while offering maximum flexibility for integrating building system elements. Because the modules are custom-made, you can define the amount of movement in the fins to meet your design’s needs fitting perfectly to the envelope of your space. Contour’s panels are available in either powder-coated steel, for a bold look, or in our Soft Sound® material, for acoustic comfort.



## Reduce Noise & Enhance Acoustics

Atmosfera®’s Soft Sound® material reduces the impact of noise from everyday annoyances like ringing, typing, and chatter resulting in a more pleasant and productive environment. Atmosfera®’s material works in concert with the design to help reduce and control reverberations leaving a lasting impression at scales ranging from assembly halls to conference rooms.



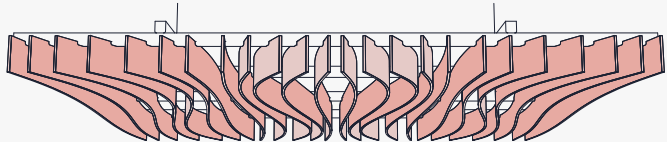
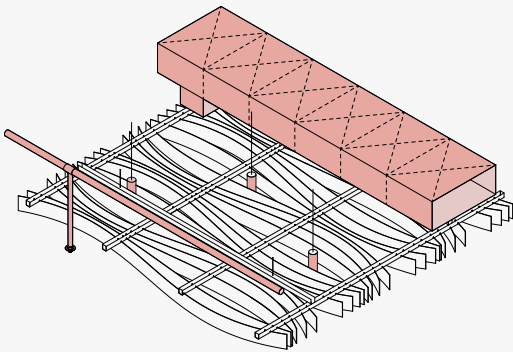
## Expansive Color Library

Choose from a large library of Soft Sound® colors and wood textures. Mix and match colors to accent fins and complement the color scheme of your space.



## Customizable Topography

Atmosfera® offers a range of configurable options, allowing you to customize fin topography to fit your space and design vision, with the help of our project team.



## No Field Trimming Necessary

All modules are built to your unique project specifications, removing the need for any field trimming and assuring easy installation.

## Open Plan Accessibility

Atmosfera®’s open design makes integrating systems above or below the modules simple and feasible. Easily removable fins and open structure makes accessing lights, HVAC, rigging points, plumbing, AV equipment, and life safety systems easy for your maintenance team.

## Dynamic Looks From All Angles

The wavering undulations of Atmosfera® fins provide great looks from wherever you are looking. Steel or Soft Sound® fins offer proprietary curved baffle system with no visible hardware.



Scan the QR or Click to Learn More about Atmosfera®



# Inspiration



**Create Dynamic Lighting**



**Design an Eye-Catching Ceiling Feature**



**Achieve Impactful Acoustic Design**

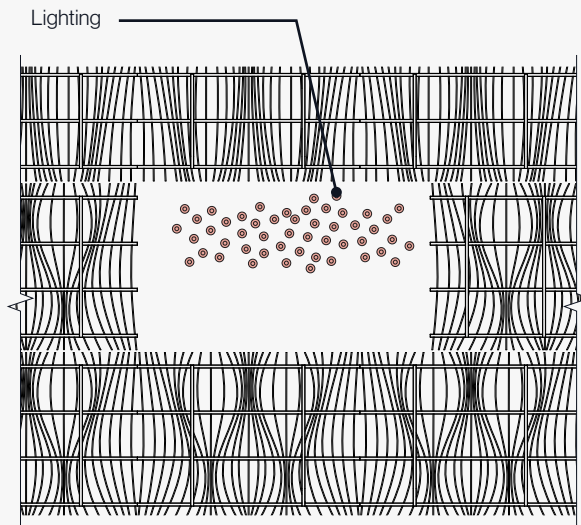
# Overview

- 1 Customization Process
- 2 Understanding the System
- 3 Available Finishes
- 4 Product Specifications

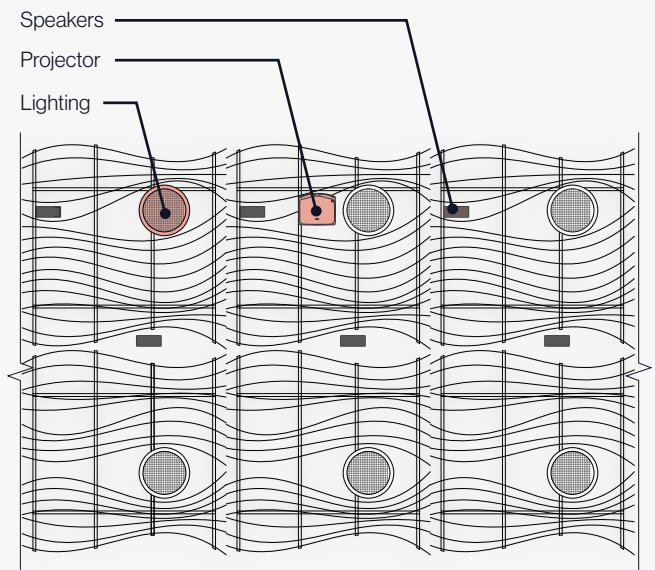
## 1 Customization Process

Atmosfera® Custom lets you tailor your baffle design to your creative vision and the unique needs of your space. Our project management team is here to guide you through the process.

### Acoustically Attenuate with Subtly Curving Soft Sound® Fins



### Achieve More Dynamic Curvature with Steel Fins

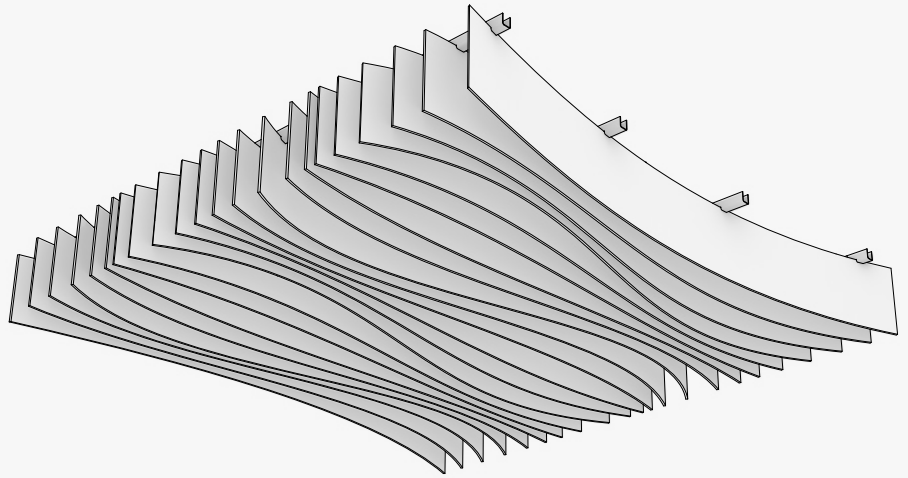




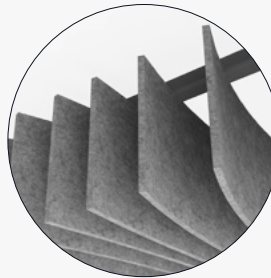
## 2 Understanding the System

### Single Module

Atmosfera® Contour's curving fins are available in both Arktura's lightweight & durable Soft Sound® acoustical material and steel.

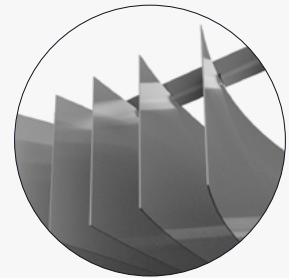


**Soft Sound® fin**



12 mm

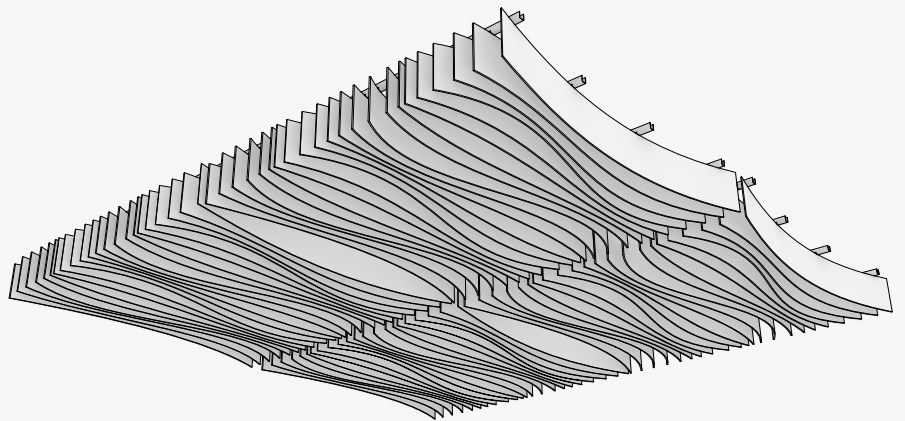
**Steel fin**



20 GA

### Multiple Modules

Modules can be continuously tiled in multiple directions in plan, using the provided connecting brackets.



## ② Understanding the System

### Understanding the Module

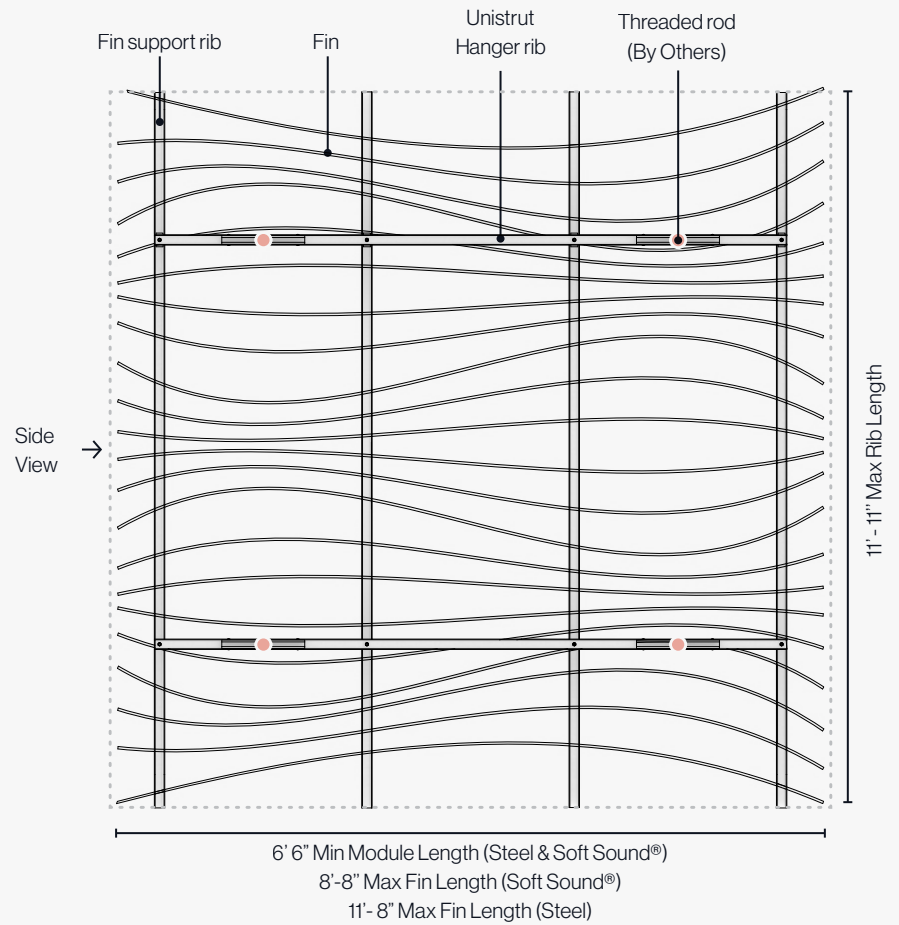
#### Plan

Atmosfera® Contour lets you design undulations in plan. Create flowing designs that create your desired look while adapting to and concealing building elements such as sensors, sprinklers, and lighting.

Steel: 93% Open

Soft Sound®: 83% Open

--- Gap between Module Fins.  
(1" Fin End to Fin End)



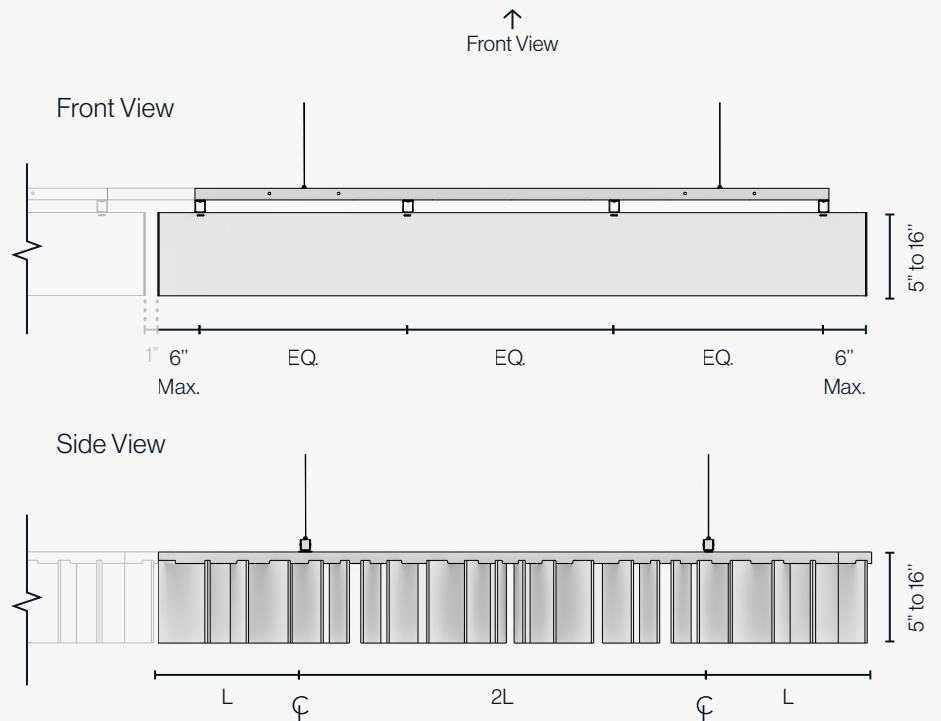
#### Elevation

Define the depth and length of fins.

Depth Range: 5" to 16"

Max fin length Soft Sound®: 8'-6"

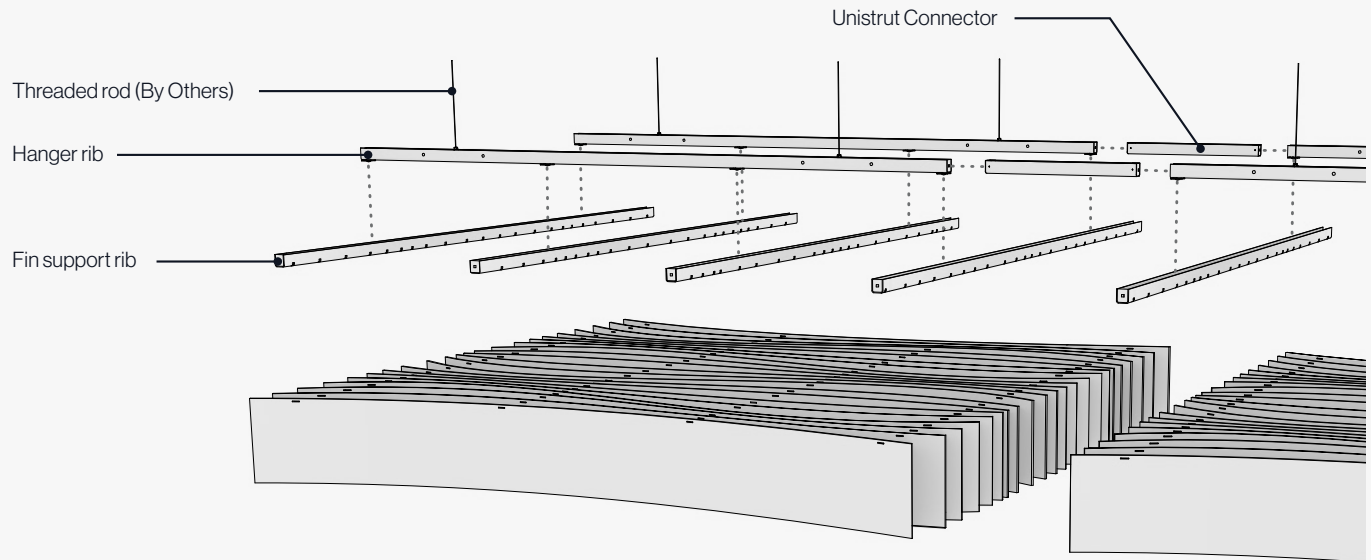
Max fin length Steel: 11'-11"



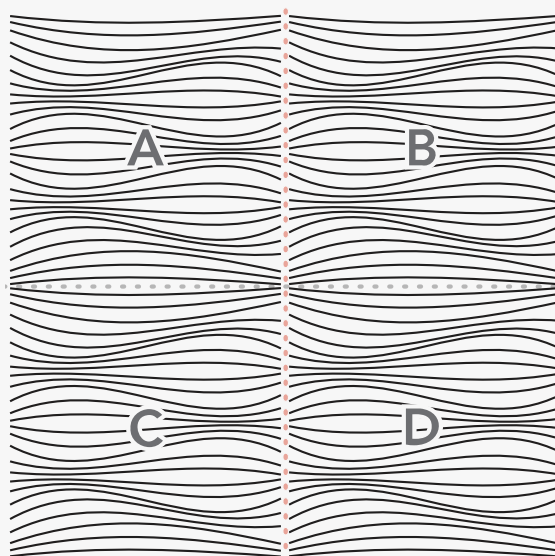
## ② Understanding the System

### Attachment Details

Atmosfera® systems are designed for ease of install and assembly. Use available joining brackets to achieve seamless fin to fin connections across modules with ease.

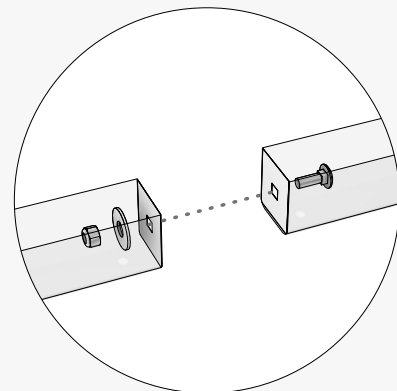


**Multiple Modules Grid**



1" Gap between Module Fins.

**Unistrut Connector and Rib End to End Connection**



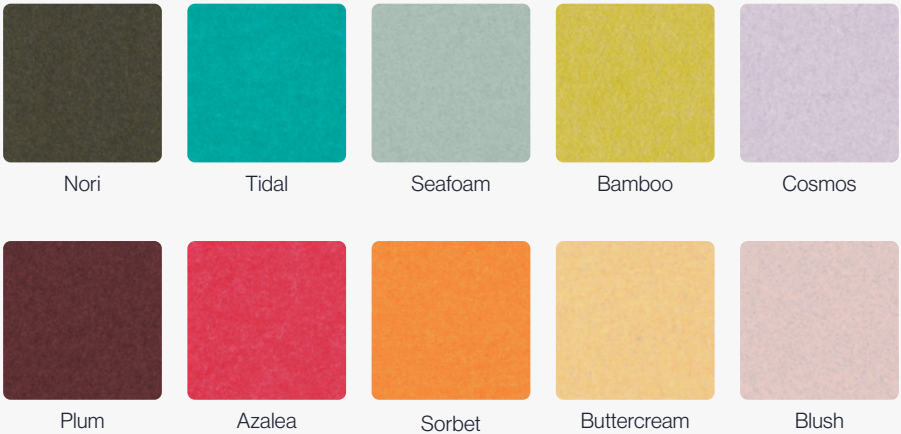
3

Available Finishes

●

Soft Sound® Fins

**Soft Sound®**  
**Vivids**  
Standard



**Soft Sound®**  
**Elementals**  
Standard



⚠

Due to the nature of non-woven materials, light may pass through Soft Sound® in any thickness or color. A translucent appearance is most apparent in lighter colors and thin material when a light source is present behind the material. Arktura makes no claims or warranties about the material performing as opaque in any circumstance. To verify a products performance for light transmittance, a mockup of the specific intended use is recommended.

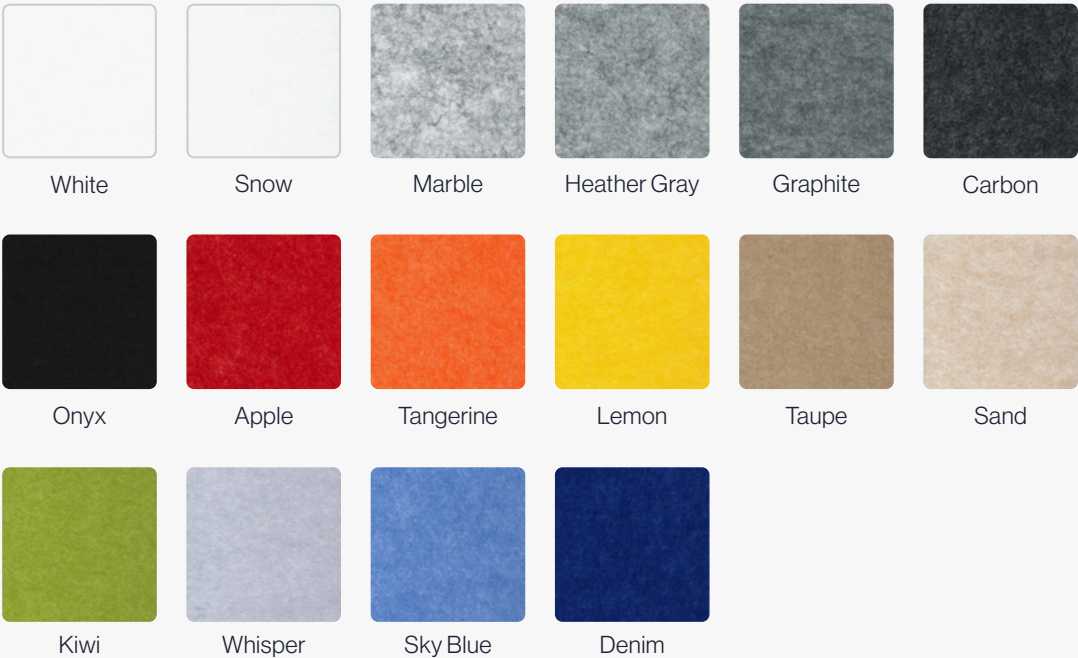


3

Available Finishes

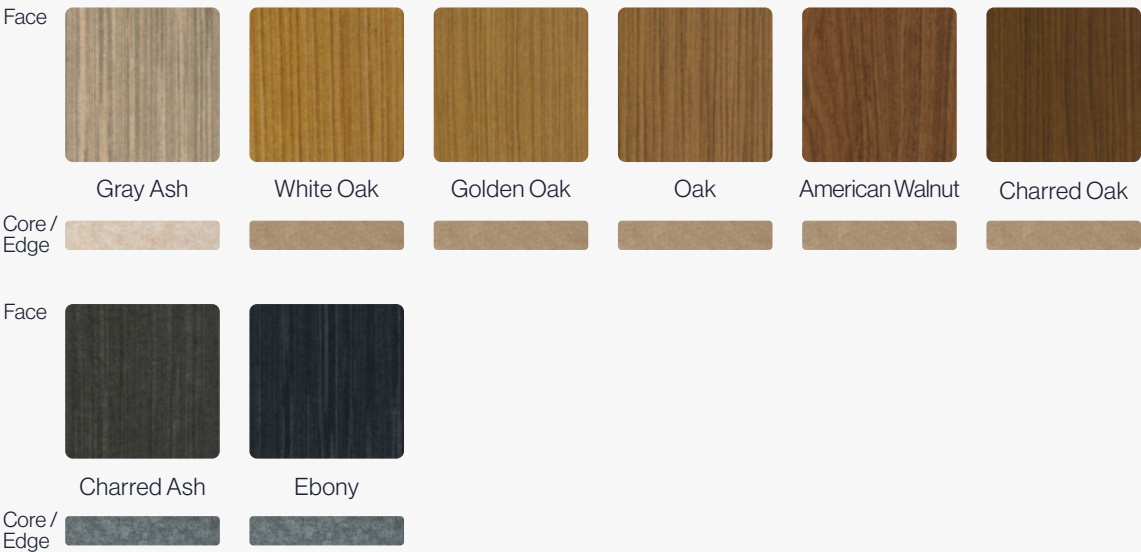
Soft Sound® Fins

Soft Sound®  
Essentials  
Standard



Soft Sound®  
Wood Texture  
Premium

*i* As with natural wood, variation in color and grain is expected and grain will not align across panels.



*!* Due to the nature of non-woven materials, light may pass through Soft Sound® in any thickness or color. A translucent appearance is most apparent in lighter colors and thin material when a light source is present behind the material. Arktura makes no claims or warranties about the material performing as opaque in any circumstance. To verify a products performance for light transmittance, a mockup of the specific intended use is recommended.

### ③ Available Finishes

#### Steel Fins & Frame Color

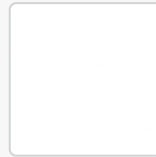
##### **Powder Coat** Standard Finish



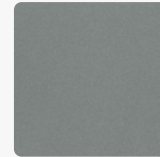
T-Grid White\*  
(Matte)



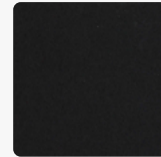
Arktura White  
(Matte)



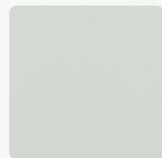
Brilliant White  
(Gloss)



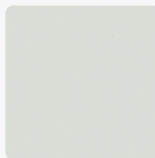
Silver Metallic  
(Semi Gloss)



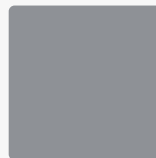
Jet Black  
(Matte)



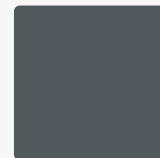
Aviator Gray  
(Gloss)



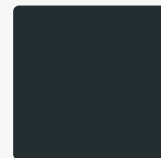
Aviator Gray  
(Matte)



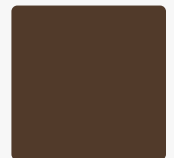
Steel Gray



Shadow



Midnight



Coffee



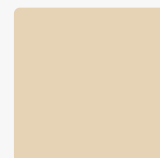
Raw Umber



Caramel



Sandstone



Oat



Sunflower



Torch



Spirit Red  
(Matte)



Azure

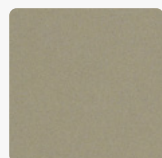


Blue Steel

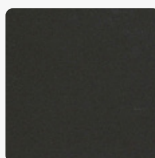


Forest Green

##### **Powder Coat** Premium Metallic Finish



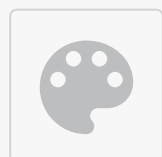
Chilled Champagne  
(Semi Gloss)



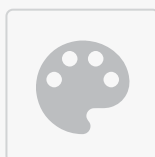
Burnished Bronze  
(Semi Gloss)

##### **Custom Powder** Colors

We offer premium non-stock RAL and custom color match options as well. Contact your sales rep for more information.



Non-stock  
RAL



Non-stock  
Metallic

\* This color was designed to pair with Armstrong color "WH" grid and trim.

ⓘ All premium and standard finishes shown are designed for interior specifications. Products may be specified for exterior use, and with alt treatments required by local code or facility, including custom color match or specialty finishes. Any changes to specification from interior standard or interior premium will result in a custom powder coat fee.

4 Product Specifications

System Specs

Fin Material	12mm Soft Sound® (PET)	20GA Steel
Module Dimension	7'6" Fin x 12' Frame Max	10' Fin x 12' Frame Max
Fin Depth	5"-16"	5"-16"
Openness in Plan	89-92%	93-94%
Frame Material	Steel	
Fire Rating	ASTME84 - Class A	
Acoustics	True NRC®: Results Vary	
Attachment Method	3/8" Threaded Rod (By Others)	
Accessibility	Yes, Removable clips at each fin	

Patented  
Copyright © 2016-2022 Arktura LLC. All rights reserved.



# Product Line

## Design Options

Select the style that best suits your vision and project needs. Pick from a variety of linear, undulating, or faceted designs.



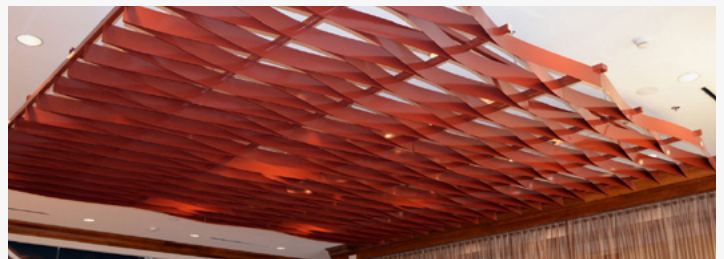
ATMOSPHERA® CONTOUR



ATMOSPHERA® CONTOUR 3D



ATMOSPHERA® LOTUS



ATMOSPHERA® RIPPLE



ATMOSPHERA® FIORA



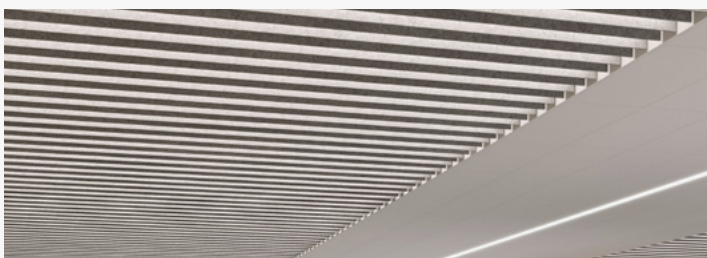
ATMOSPHERA® PULSE



ATMOSPHERA® ANALOG



ATMOSPHERA® ANALOG 3D



ATMOSPHERA® VERSA



ATMOSPHERA® VERSA 3D