



A R K T U R A

# TRANSPORTATION

CUSTOM MANUFACTURING & STANDARD PRODUCTS LOOKBOOK



## TRANSPORTATION

ARKTURA LOOKBOOK

**LAX TERMINAL 2**  
LOS ANGELES, CALIFORNIA, USA

3

**LAX TERMINAL 6**  
LOS ANGELES, CALIFORNIA, USA

5

**SFO TERMINAL 3**  
SAN FRANCISCO, CALIFORNIA, USA

7

**BNA SIGNATURE TERMINAL**  
NASHVILLE, TENNESSEE, USA

9

**DFW INTERNATIONAL AIRPORT**  
DALLAS, TEXAS, USA

11

**PHX INTERNATIONAL AIRPORT**  
PHOENIX, ARIZONA, USA

13

**BRIGHTLINE ALL ABOARD**  
WEST PALM BEACH, FLORIDA, USA

15

**VINCE LOMBARDI**  
RIDGEFIELD, NEW JERSEY, USA

17

**DELTA SKY CLUB**  
ATLANTA, GEORGIA, USA

18

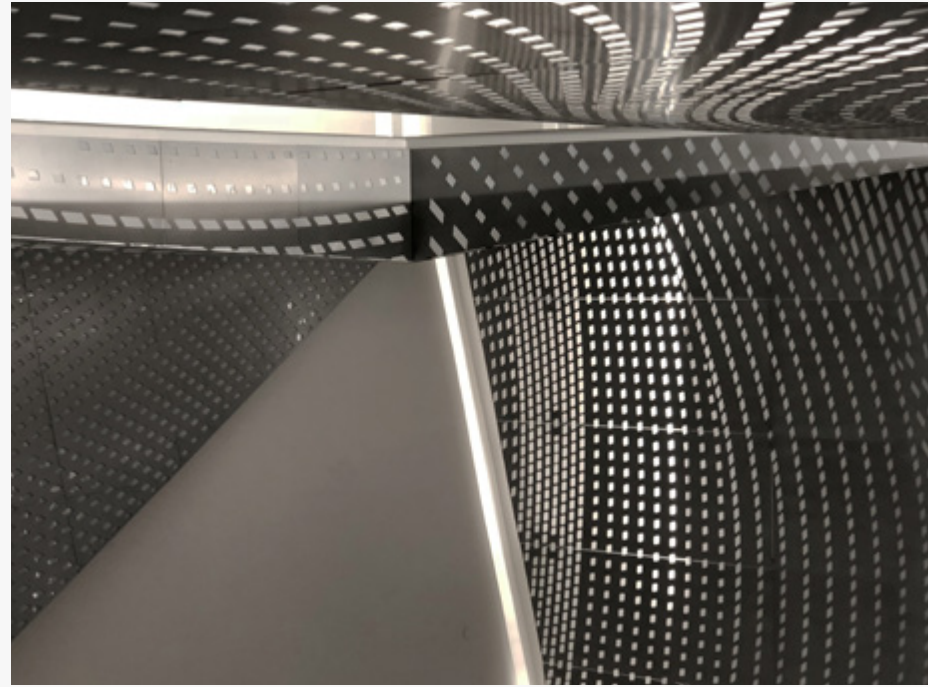
**LAX STARBUCKS**  
LOS ANGELES, CALIFORNIA, USA

19

WESTFIELD  
LOS ANGELES, CALIFORNIA, USA

# LAX TERMINAL 2

Arktura worked closely in a design and fabrication partnership with Westfield and Akar Studios to create a graphic and engaging effect in the newly imagined T-2 at LAX. Graphic Perf® interior custom panels are poetically woven throughout the terminal to create a vibrant installation and impact. The design makeover has defined the LAX experience. It elevates travelers' expectations in creating a genuinely world-class airport environment.



GRAPHIC PERF®

## CUSTOM PANELS & DETAILS



SOLUTIONS STUDIO®

# CUSTOM LIGHT FEATURE

MONTALBA ARCHITECTS  
LOS ANGELES, CALIFORNIA, USA

# LAX TERMINAL 6

Montalba Architects & Corgan Associates requested that Arktura's Solutions Studio® capture the bustling vibrancy of L.A.'s iconic Sunset Boulevard in a lighting system, as part of LAX's T-6's "swanky" \$70.5-million makeover. The illumination drives the terminal's experience and is organized by interconnected pathways that lead passengers on their journey. Arktura proposed, designed, and directed a simple install of the terminal's innovative lighting system consisting of a winding steel structure and a powder-coated stainless steel mesh diffuser masking the LED illumination. This project solution by Arktura afforded Westfield the facility to debut its latest transport hub before the deadline and under-budget.



# SFO TERMINAL 3

Gensler rehabilitated SFO's Terminal 3 boarding area intending to deliver a fresh, modernized, and lively environment that would put a harried traveler at ease. Part of the design required a displacement air ventilation system that conserved energy while providing cold air at a human level rather than from overhead. Gensler succeeded in collaboration with Arktura in achieving imaginative cladding for the ventilation system and columns using Graphic Perf®. The openings in the Graphic Perf® panels permit air to filter through while hiding the system from view while accenting Gensler's bright and modern space.



© Gensler



GRAPHIC PERF®

## CONCEAL BUILDING SYSTEMS



GRAPHIC PERF® | SOFTGRID® | ATMOSPHERA®

# PRODUCTS THAT FIT YOUR SPACES



© Chad Baumer Photography



SCHENKEL SHULTZ  
NASHVILLE, TN

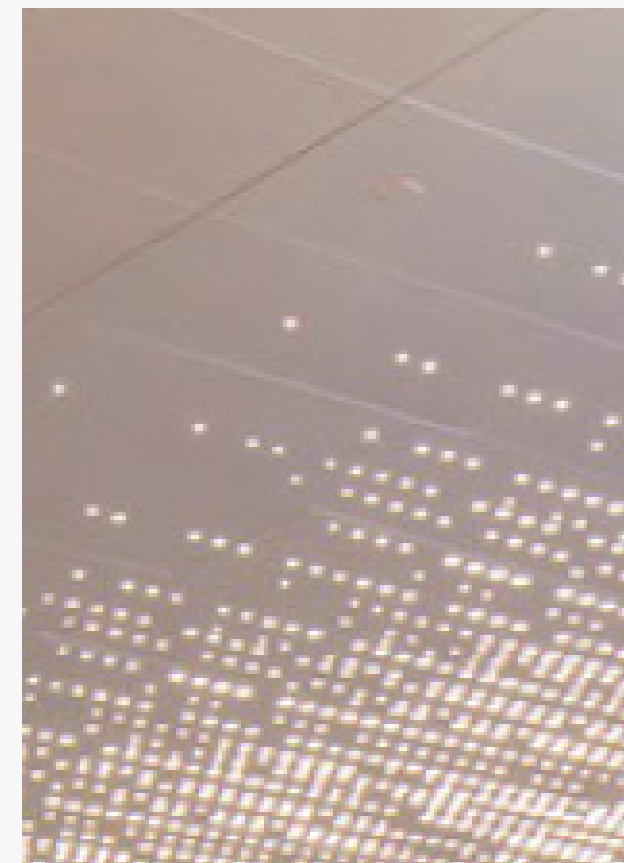
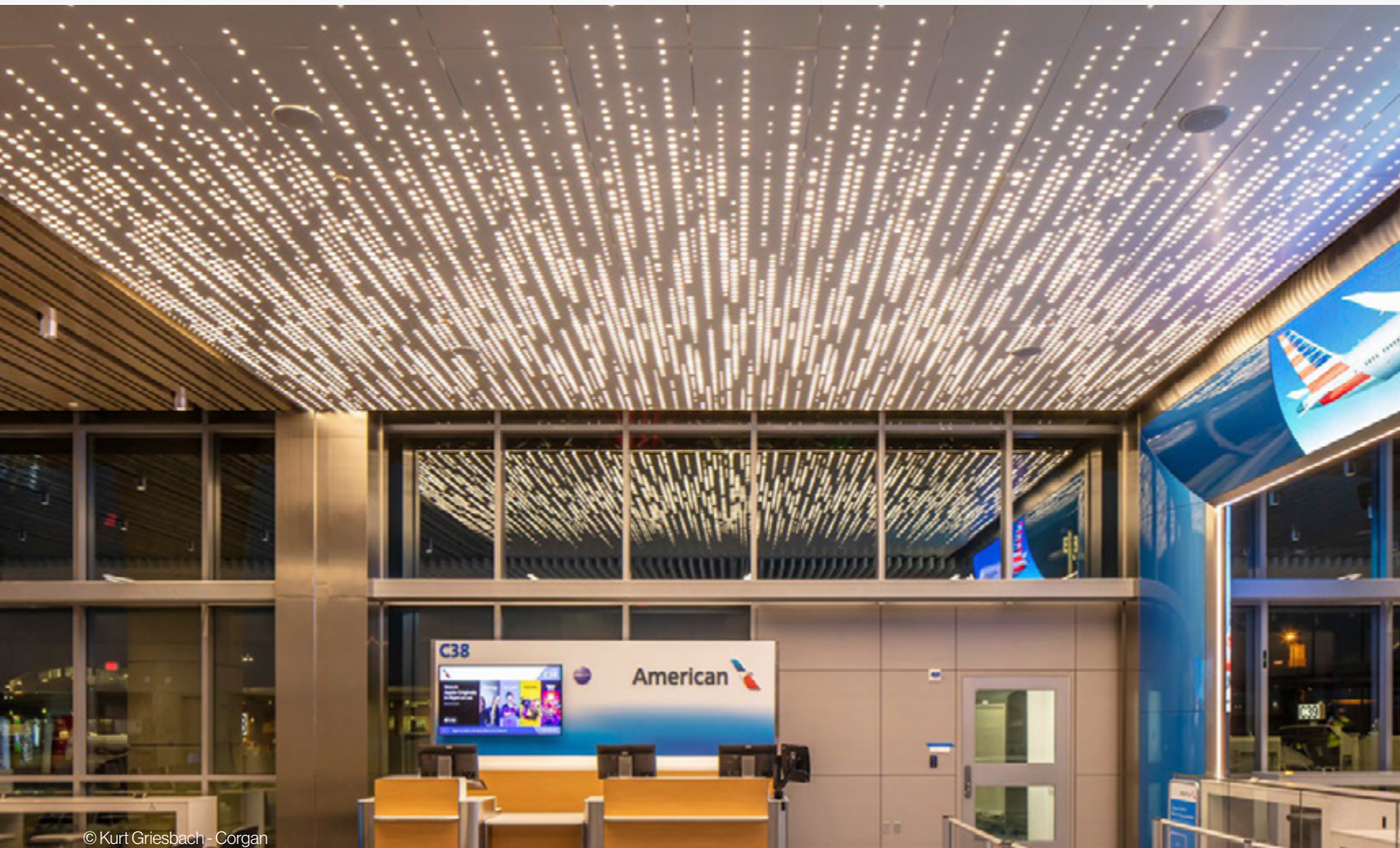
# BNA SIGNATURE TERMINAL

Signature FS unveiled their new FBO terminal at Nashville International Airport, featuring numerous systems and solutions by Arktura. Travelers and pilots are greeted upon arrival with an extensive Graphic Perf® Custom Photoreal Exterior treatment, paying homage to Nashville's iconic music legacy. For the interior, the SoftGrid® Wave system is paired with the subtle complementary system, Atmosphera® Linea, to communicate an environment acoustically attuned to luxury. The naturally tonal variations of Arktura's materials compliment Signature's artifacts, from musicians and celebrities who pass through their gates, prominently displayed through the terminal design.

CORGAN  
DALLAS, TEXAS, USA

# DALLAS FORT WORTH INTERNATIONAL AIRPORT

An incredibly ambitious project, DFW International Airport added four new gates to their C terminal, bestowing a high-tech makeover for the airport. Built and designed in collaboration with Corgan, this new terminal replaced its aging, obsolete predecessor, offering biophilic features and modern amenities. Terminal buildings were constructed modularly offsite, transported by truck across airline runways, arranged in place, and finished with contemporary, human-centric interiors. Brand new terminals feature two Arktura Vapor® products, Vapor® Solid and a custom Vapor® pattern. The Vapor® Solid panels bring robust cosmetic coverage to the airport with their powder-coated aluminum build. Guiding passengers to the airline gates are a series of illuminated Vapor® panels with custom dappled perforations throughout. The backlighting options on this Vapor® panel provide intuitive wayfinding for travelers arriving at their gate.



VAPOR® CUSTOM | VAPOR® SOLID

**ILLUMINATED  
STYLIZED  
WAYPOINT  
NAVIGATION**

SOLUTIONS STUDIO®

# CUSTOM DESIGNED ACOUSTIC WAVES



CORGAN  
PHOENIX, ARIZONA

## PHOENIX SKY HARBOR INTERNATIONAL AIRPORT

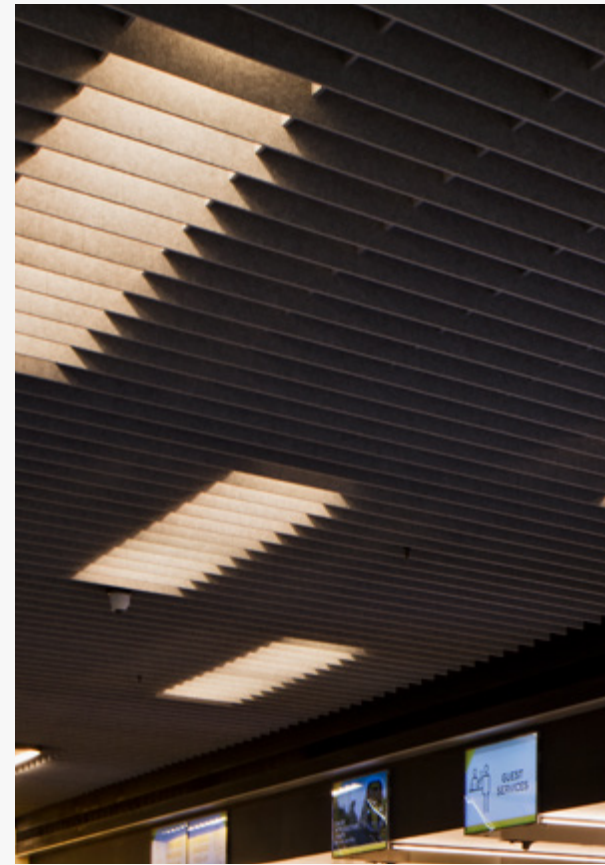
Phoenix's Sky Harbor, "America's Friendliest Airports", and one of its busiest, recently opened a new Terminal 4 concourse. Arktura's Solutions Studio® team of designers, in partnership with Corgan Arizona, crafted a stunning, massive-scale, suspended acoustic ceiling installation. With the design language inspired by the nearby Imperial Sand Dunes, these massive undulating acoustic fins were custom-made of Arktura's Soft Sound® acoustic material and constructed up to 8-9ft deep in a natural and neutral tone finish that drew inspiration from the surrounding desert. Initially based on an adaptive Atmospha® system, the scope was retooled into a custom project to fulfill the scope and scale of the finalized space. The custom baffles effectively mitigate excess noise throughout this busy terminal, providing travelers with a quiet and peaceful experience. This acoustic undertaking was part of a larger-scale project to help increase traveler wellness at one of the nation's busiest airports.

© Kurt Griesbach - Corgan





© Steven Brooke



ZYSCOVICH ARCHITECTS  
FLORIDA, USA

# BRIGHTLINE ALL ABOARD

The unprecedented infrastructure project, led by SOM and Zyscovich Architects, provides a vital new service for Florida residents, businesses, and tourists in a bustling transportation hub. Arktura's acoustic ceiling, SoftGrid® Square, was selected for use through the multi-layered vertical structure, ensuring the visitor's experience (surrounded by a bustling train station) was comfortable to their senses. It also contributes to the scheme of stacked dynamic linear structure of the station - an architectural icon of a 21st-century Miami.



SOFTGRID® SQUARE

## ACOUSTIC PERFORMANCE IN A BUSY ENVIRONMENT

RITTILUECHAI ARCHITECTURE  
LOS ANGELES, CALIFORNIA, USA

# VINCE LOMBARDI

GRAPHIC PERF® EXTERIOR



RITTILUECHAI ARCHITECTURE  
LOS ANGELES, CALIFORNIA, USA

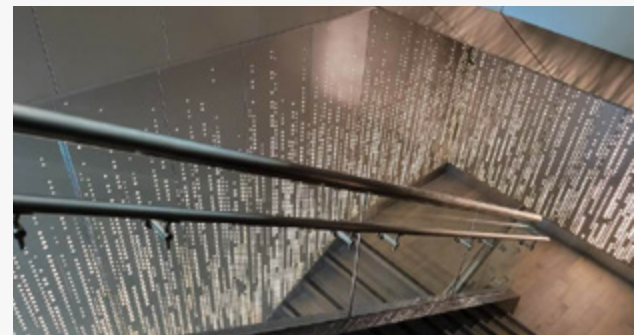
# DELTA SKY CLUB

## SOLUTIONS STUDIO®

Travelers passing through this airport can take the edge off stressful travel plans in this relaxing retreat. Arktura's Solutions Studio® crafted a stunning series of custom Vapor® panels for the Delta Sky Club, designed and built in partnership with HBA - Atlanta. The backlighting option on the Vapor panels adds intrigue to the custom design while also acting as a wayfinder to the Sky Club. The custom gradient perforation on these panels runs multiple floors taking members from the main airport area into the private lounge.



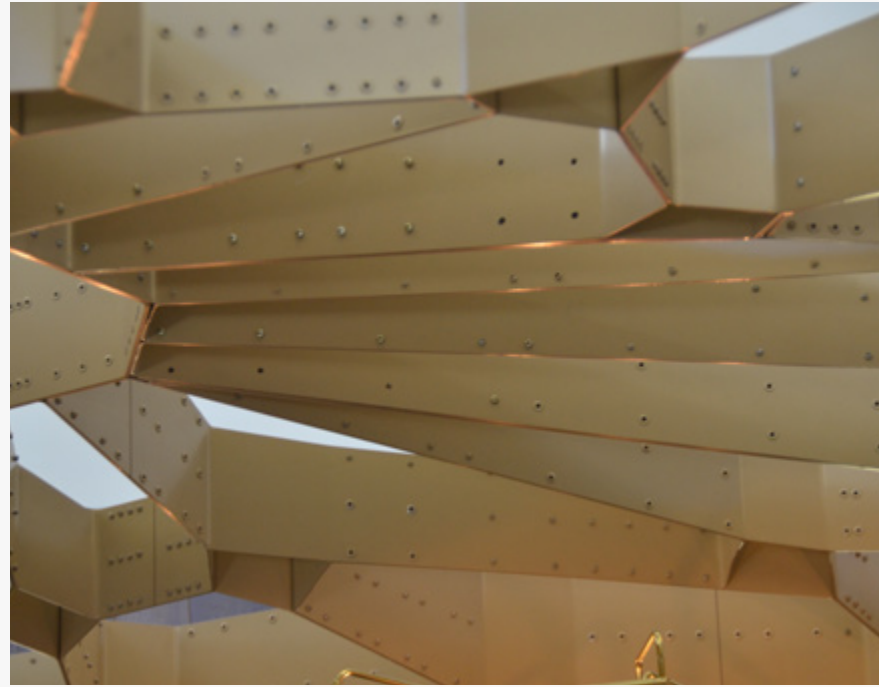
The Vince Lombardi Service Area in New Jersey serves as a crucial rest and refueling station for busy travelers passing through Ridgefield. Designed in partnership with DNA Architects, this stunning facade welcomes visitors to its many food and fueling offerings on the New Jersey Turnpike. Through our proprietary technology, we could execute this intriguing graduation from the top to the base of the structure thanks to its unique custom panels. Graphic Perf® scripted panels featuring optional backlighting make up the exterior focal point. These custom-made panels come together seamlessly to recreate the aesthetic of the NFL's Vince Lombardi Trophy. The interior features Atmosfera® Analog 3D Acoustic Cloud system in our Soft Sound® material, providing a quiet atmosphere for travelers.



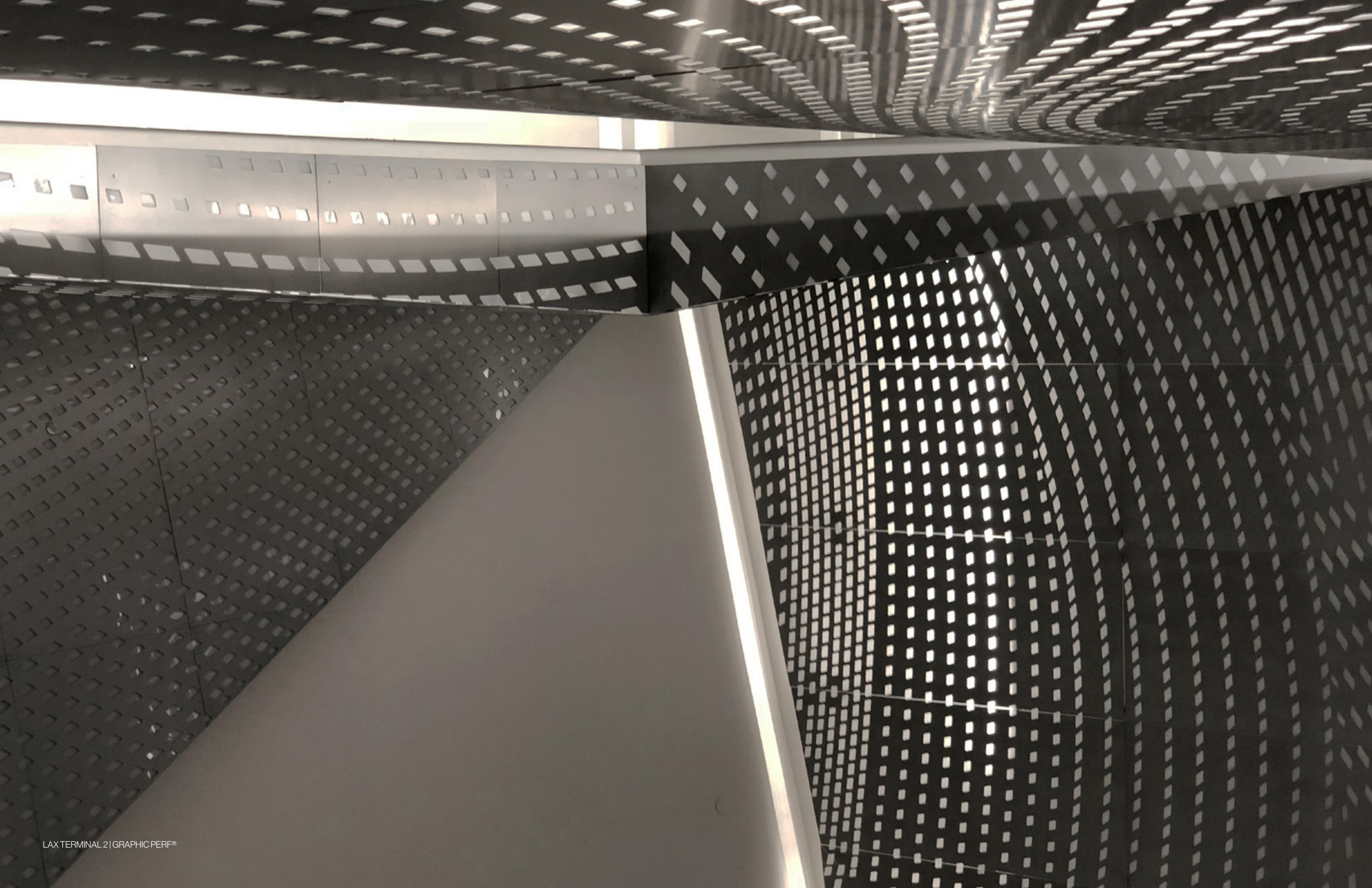
STARBUCKS  
LOS ANGELES, CALIFORNIA, USA

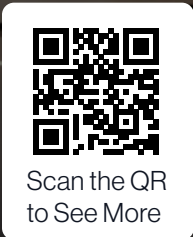
# LAX STARBUCKS

The Starbucks canopy's overall design at Los Angeles International Airport was inspired by the patterns in "latte art" - a motif that both informs the structural system and provides a visual cue for customers. Like the Pinkberry canopy at LAX, this structure's uniquely formed planar surfaces and 10,200 points of alignment demanded the creation of groundbreaking new software and manufacturing strategies. Our design and production processes' sophistication and precision enabled this self-supporting canopy to be pre-fabricated off-site, shipped as a kit-of-parts system, and assembled in only a few days.



SOLUTIONS STUDIO®  
**TRANSFORM  
METAL INTO  
LATTE ART**





ARKTURA

2025

PHOENIX SKY HARBOR | SOLUTIONS STUDIO®